

CERTIFICATE OF LOCATION OF GOVERNMENT CORNER

EAST QUARTER Corner of Section 23, Township 108N, Range 39W

5th Principal Meridian, State of Minnesota, County of MURRAY

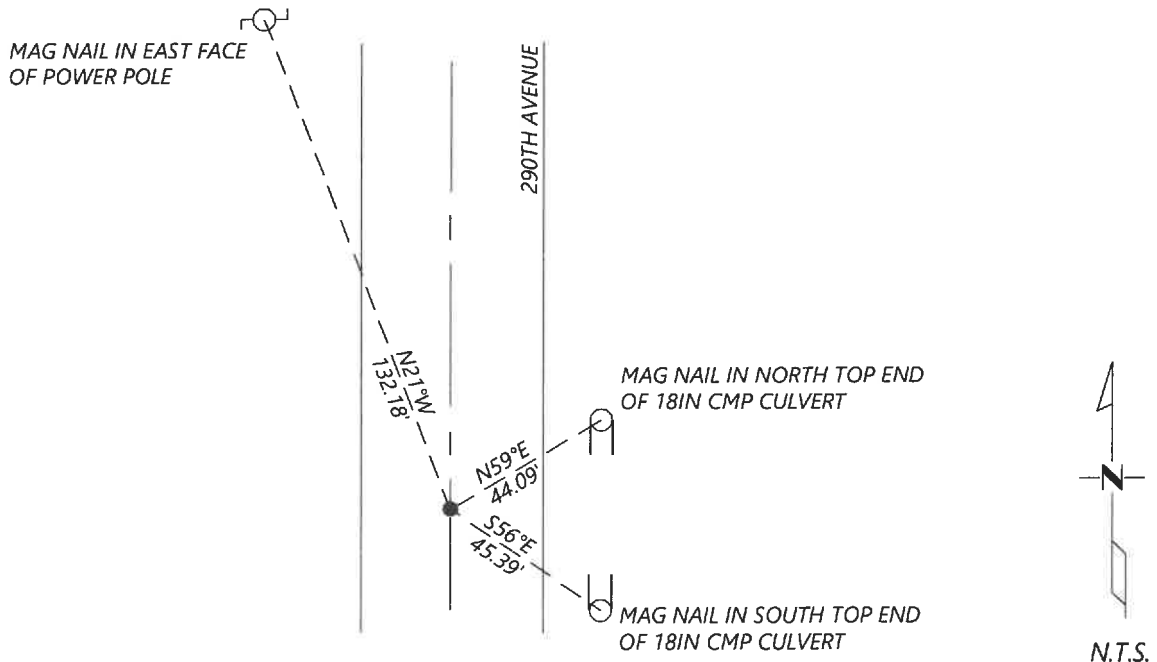
At the corner location shown on the sketch:

On 09/02/2020 found a MAG NAIL, 0.3FT BELOW SURFACE.

left monument as found lowered monument removed monument (explain)

On _____ placed a _____

SKETCH OF REFERENCE TIES



Statement of evidence for this corner location is on back of this page.

I hereby certify that this document was researched and prepared by me or under my direct supervision and that I am a licensed Land Surveyor under the laws of the State of Minnesota.

Signature [Handwritten Signature]

Date 6/17/2021 License No. 45874

Title:

- Land Surveyor Professional Engineer
- County Surveyor County Engineer

OFFICE OF THE COUNTY RECORDER

County of Murray

I hereby certify that this document was filed in the Co.

Recorder's office at _____ M. on the _____ day of _____ A.D. 20 _____

County Recorder [Handwritten Signature: Karen Brown]

by JUN 22 2021, Deputy

DOCUMENT NO. _____

Statement of Evidence:

East Quarter Corner of Section 23, Township 108 North, Range 39 West, 5th Principal Meridian, Murray County, Minnesota.

1861 July, GLO Notes: Set post on mound.

1975 July, Highway Department records show that they located a pointed stone and placed a steel pin at the corner.

Nail & cap in corner post	E	48.95ft
Nail & cap in fence post	WNW	51.49ft
Nail & cap in power pole	SW	74.39ft

1999 October, A survey in Section 23 by Perry Zieske shows he found an iron pin over stone at the corner.

2003 April, Road plans for CSAH 45 show the corner was assumed at PI 181+07.04.

Coordinates: N: 208467.98 E: 574591.86

2006 September, A survey in Section 24 by Perry Zieske shows a found PK nail at the corner.

County Coordinates: N: 208467.77 E: 574591.81

2020 September, Westwood Professional Services searched and found a mag nail.

County Coordinates: N: 208467.68 E: 574592.81 which fits the road plans and Zieske survey well.
I accepted the found monument and set reference ties.

Analysis of the recovered data, field evidence and survey measurements, indicates that the monument found is the correct perpetuation of this corner. For additional information concerning this corner please contact Westwood Professional Services.